

[34 MPa]



Features

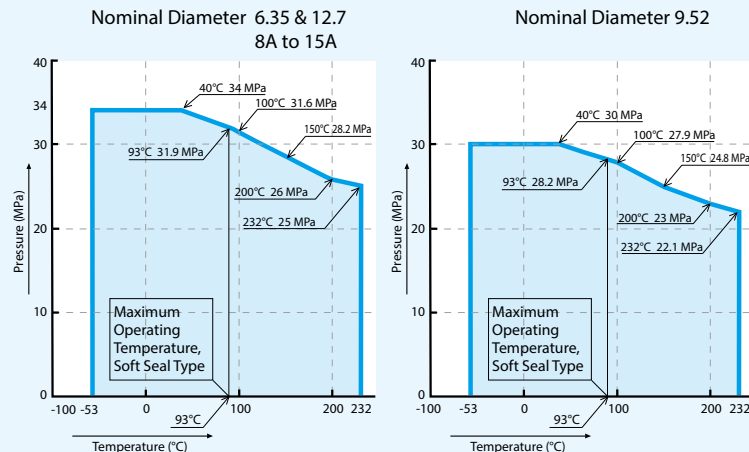
1. A bonnet-less design keeps the valve compact and eliminates bonnet leaks.
2. Thanks to a design that emphasizes ease of use, the valve features low handle torque and is easily opened and closed.
3. Multiple gland packing variations make for a highly reliable gland seal structure.
4. The valve is available in metal seal and soft seal variants.
5. Some models have received ministerial certification for use with high-pressure gases.

Technical Data

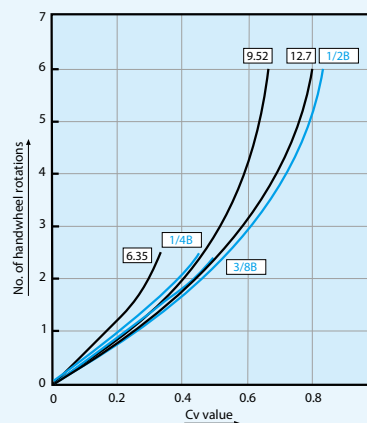
Nominal Diameter	Working Pressure (MPa)	Temperature (°C)
6.35	34	-53 to +232 ※2 (-53 to +93)
9.52	30 ※1	
12.7	34	
8A to 15A	34	

※1: For New V-Lok connections, only the 9.52 size has a set pressure of 30 MPa.
 ※2: The operating temperature range for the soft seal type is -53°C to 93°C.

Temperature and Pressure Rating



Cv Value Characteristics (PUH-934P, PUH-134P type)



Materials

Description	Materials
Body	SUSF316
Stem	SUS316 ※1
Gland packing	PEEK+C-PTFE
Handle	A5056B ※2

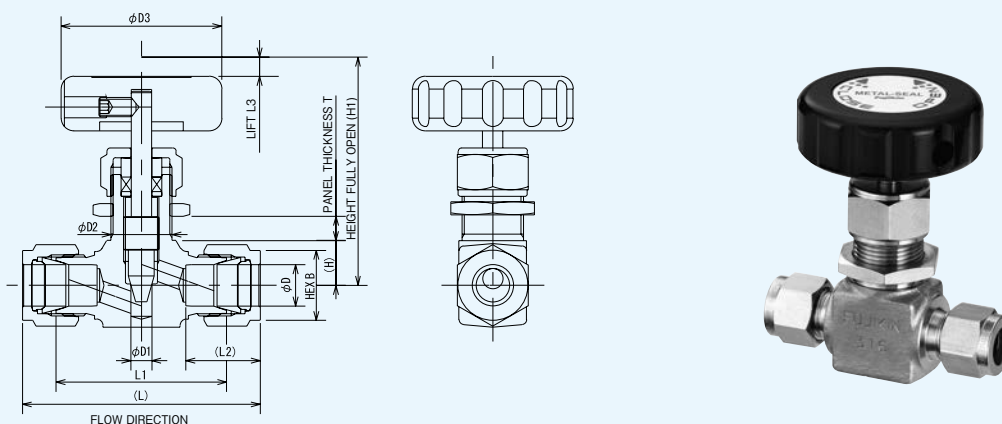
※1: The seat in soft seal-type models is made of PCTFE.
 May use SUS316 or ASTM-spec material (SUS316 equivalent).

※2: The standard handle color is black. We can also manufacture other colors.

When selecting a valve

1. To ensure safe and proper use of the valve, please consult with Fujikin concerning operating conditions, frequency, and maintenance timing when selecting a model.
2. The valve uses fluorine-based grease on parts that come into contact with liquid or gas in the valve. It is not suitable for use with fluids such as solvents that would dissolve the grease. If you are unsure whether the liquid with which you intend to use the valve would dissolve the grease, please contact us before ordering.
3. Using the soft seal type with the direction of flow reversed from that indicated by the arrows could dislodge the disk packing. Please use with pipes in the proper direction of flow.
4. Use of a soft seal-type valve in applications where adiabatic compression could cause the temperature of the fluid to rise could cause deformation of, or damage to, the disk. Please use a metal seal-type model in such applications. In the event that a fluid such as hydrogen gas could react with air (oxygen) inside the pipe to cause an abrupt increase in temperature, please replace residual air in the pipe with an inert gas such as nitrogen. When using a metal seal-type model, abrupt opening or closing of the valve could lead to an unanticipated accident. Please open and close the valve gradually.
5. Please contact us if you require another connection type, for example a socket weld.

Metal Seal Type (New V-Lok type)

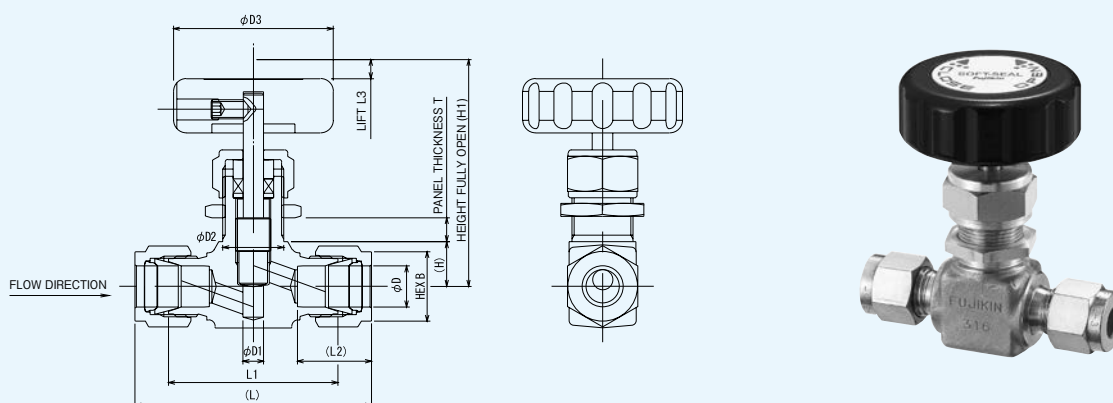


Dimensions

UNIT (mm)

Nominal Diameter D	Orifice Diameter D1	Face to Face Dimension		Pipe Connection Part			Panel Mounting		Height Fully Open H1	Lift L3	Handle Diameter D3	Panel Thickness T		Cv Value (MAX.)	Weight (approximate) kg	Ordering Numbers
		L	L1	L2	B		D2	H				MIN.	MAX.			
6.35	4	57.8	43	15.2	9/16	14.3	15	10.5	54	2.5	40	2	5.5	0.34	0.2	PUH-934P-6.35-V
9.52	6.5	66.8	52	16.8	11/16	17.5	19.5	14	71	6	50	2	7.5	0.65	0.4	PUH-934P-9.52-V
12.7	6.5	73.2	53	22.9	7/8	22.2	19.5	14	71	6	50	2	7.5	0.8	0.4	PUH-934P-12.7-V

Soft Seal Type (New V-Lok type)

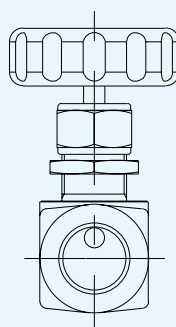
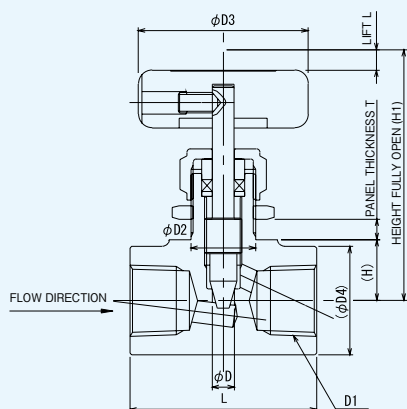


Dimensions

UNIT (mm)

Nominal Diameter D	Orifice Diameter D1	Face to Face Dimension		Pipe Connection Part			Panel Mounting		Height Fully Open H1	Lift L3	Handle Diameter D3	Panel Thickness T		Cv Value (MAX.)	Weight (approximate) kg	Ordering Numbers
		L	L1	L2	B		D2	H				MIN.	MAX.			
6.35	4	57.8	43	15.2	9/16	14.3	15	10.5	54	2.5	40	2	5.5	0.34	0.2	PUD-934P-6.35-V
9.52	6.5	66.8	52	16.8	11/16	17.5	19.5	14	71	6	50	2	7.5	0.65	0.4	PUD-934P-9.52-V
12.7	6.5	73.2	53	22.9	7/8	22.2	19.5	14	71	6	50	2	7.5	0.8	0.4	PUD-934P-12.7-V

Metal Seal Type (thread type)

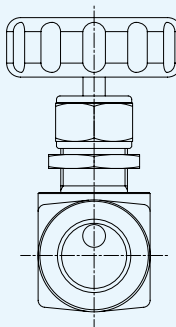
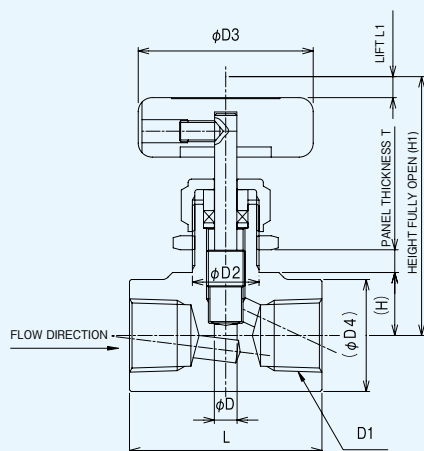


●Dimensions

UNIT (mm)

Nominal Diameter		Orifice Diameter D	Face to Face Dimension L	Pipe Connection Part Screw D1	Panel Mounting		Height Fully Open H1	Lift L1	Handle Diameter D3	D4	Panel Thickness T		Cv Value (MAX.)	Weight (approximate) kg	Ordering Numbers
A	B				D2	H					MIN.	MAX.			
8	1/4	4	45	Rc1/4	15	13	57	2.5	40	21	2	5	0.46	0.3	PUH-134PB
10	3/8	4	50	Rc3/8	15	15	58.5	2.5	40	25	2	5	0.52	0.4	PUH-134PC
15	1/2	6.5	55	Rc1/2	19.5	18	74.5	6	50	32	2	6	0.82	0.6	PUH-134PD

Soft Seal Type (thread type)



●Dimensions

UNIT (mm)

Nominal Diameter		Orifice Diameter D	Face to Face Dimension L	Pipe Connection Part Screw D1	Panel Mounting		Height Fully Open H1	Lift L1	Handle Diameter D3	D4	Panel Thickness T		Cv Value (MAX.)	Weight (approximate) kg	Ordering Numbers
A	B				D2	H					MIN.	MAX.			
8	1/4	4	45	Rc1/4	15	13	57	2.5	40	21	2	5	0.46	0.3	PUD-134PB
10	3/8	4	50	Rc3/8	15	15	58.5	2.5	40	25	2	5	0.52	0.4	PUD-134PC
15	1/2	6.5	55	Rc1/2	19.5	18	74.5	6	50	32	2	6	0.82	0.6	PUD-134PD